

Final Written Exam

Write all your answers on a separate document and email it to me by 5/9 11:59PM

Part One

After band class, three students come up to you and ask the following three questions. Answer each one in approximately one paragraph.

Question 1 (15 pts.):

“What’s the difference between a baritone and a euphonium? Was baritone invented to be a trombone with valves? Which came first: the slide or valves? Why does it look like a tuba? When was it invented, and what was around before that?”

Question 2 (10 pts.):

“My neighbor said that ‘shofar’ I sounded ‘awful-cleide’ when I practiced ‘sack butt!’ What the heck were they talking about??”

Question 3 (15 pts.):

“I sold 400 gallons of lemonade at my lemonade stand last summer and I want to buy a trombone to use at college as a music major. I'm planning on studying classical music primarily. What type should I get? How would a new horn be different from my student horn? Is my old student horn useful for anything? Do I need a new mouthpiece too??”

Part Two

Answer the following questions with one or two sentences each.

Question 4 (6 pts.):

What is the ideal “first note” to aim for with beginning trombone students? Why is this note preferred?

Question 5 (6 pts.):

There are two terms for the first partial of the harmonic series of a brass instrument. What are they?

Question 6 (6 pts.):

As it pertains to legato on the trombone, define the terms “natural slur” and “legato tongue”

Question 7 (4 pts.):

What is a sousaphone?

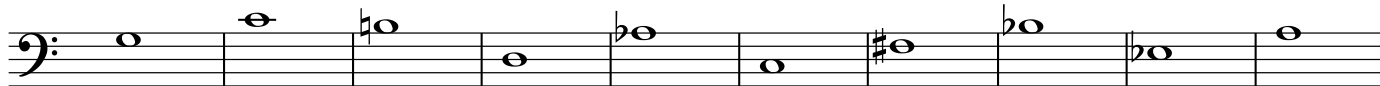
Question 8 (8 pts.):

What is the relationship between bass clef euphonium fingerings, treble clef euphonium fingerings, and trumpet in Bb fingerings?

Part Three

Assume all questions are referring to a tenor trombone with no valve (unless otherwise specified).

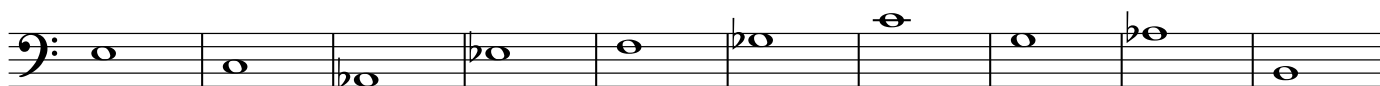
Question 9 (4 pts.): Which notes below are on the same partial as the first note?



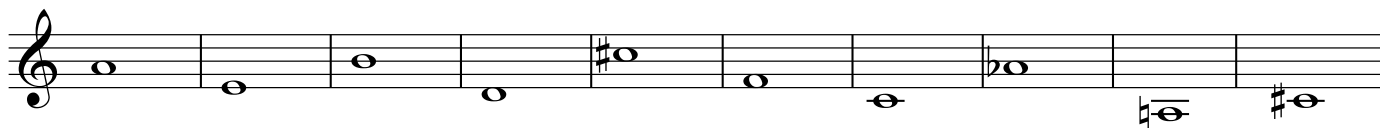
Question 10 (4 pts.): Which notes below **ARE NOT** on the same partial as the first note?



Question 11(4 pts.): Which four notes below are in the same slide position?



Question 12 (4 pts.): Which four notes below use the same treble clef euphonium fingering?



Question 13 (10 pts.): For the following legato passage, write the correct articulation below each note. Use "T" for normal tongue, use "L" for legato tongue, and use "S" for a natural slur. I've filled in the correct answers for the last phrase as an example.



Question 14 (2 pts.):

Which ascending major scale uses the slide positions 6-4-2-1-4-2-4-1?

Question 15 (2 pts.):

Which descending major scale uses the bass clef euphonium fingerings 0-2-12-0-1-12-13-0?

Bonus Questions:

Bonus Question 1 (5 pts.):

What is the most common mute your students will need? What is the second most common?

Bonus Question 2 (5 pts.):

Describe the double bell euphonium.